
Hypro-Sorb[®] X

cones made of 99.9% Atelo-Collagen Type I



General information

Hypro Sorb® X is a root shaped cone of pure, crystalline Atelo-Collagen Type I that is indicated to stop the bleeding after tooth extraction and to help preserve the alveolar ridge.

It is

- sterile,
- biocompatible,
- apyrogenic,
- non-immunogenic and
- non-allergenic.



Hypro-Sorb® X, package of ten cones



Hypro-Sorb® X

Indications

- Closure of extraction sites
- Alveolar ridge preservation
- Control of bleeding in extraction sockets or biopsy sites
- Furcation defects (class I - II)
- Fenestration defects
- Intraosseous defects (1-3 walls)

Properties

- Pure, crystalline Atelo-Collagen Type I of bovine origin, free of antigenic telopeptides
- Highest degree of tissue biocompatibility and safety with excellent wound healing characteristics
- The special shape of the cones (Ø6mm x 20 mm x Ø 10mm) is an excellent matrix for the bone formation after tooth extraction
- Usable in infected wounds or with medically compromised patients
- Accelerated soft tissue healing
- Potent haemostatic effect
- Can be cut to size without loss of haemostatic property
- Resorbed within two to four weeks
- Long shelf life, sterile and safe for five years after production

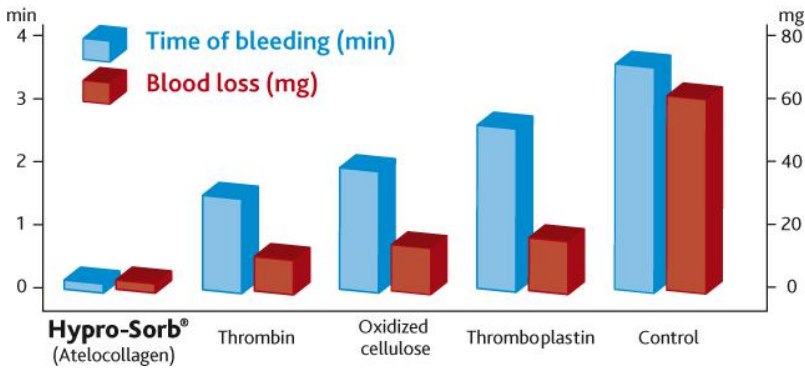
Advantages

- High safety for patients
- Manufactured from highly purified type I bovine Achilles tendon
- Haemostatic and bacteriostatic activity
- Prevents penetration of epithelial cells into the bone defect
- Release activity of growth factors (TGF- β and PDGF)

Physiological activity

The pure Atelo-Collagen Type I in Hypro-Sorb X is a very strong thrombocytes aggregator. During its degradation it accelerates two main functions. One is the well documented haemostatic activity, and the second is the release of growth factors (TGF- β and PDGF) of the thrombocytes content. Other tissue interactions are the inhibition of collagenolytic activity of wound excretions, support of granulation, epithelisation, the promotion of soft tissue healing, and guided tissue regeneration (GTR).

Research results show that with the help of the conuses' barrier function, it is possible to prevent the penetration of epithelial cells into the bone defect and thus allow for gradual growth and reconstruction of the bone tissue of the alveolar ridge.



Comparison of times to haemostasis

Handling instructions

- Cleanse the tooth extraction site
- Insert Hypro-Sorb X into the bleeding cavity of the extraction socket
- Suturing the flaps helps keep the conus in place
- In case of larger defects, it is recommended to cover the conus with a haemostatic felt such as Hypro-Sorb® R

Important information

Composition:

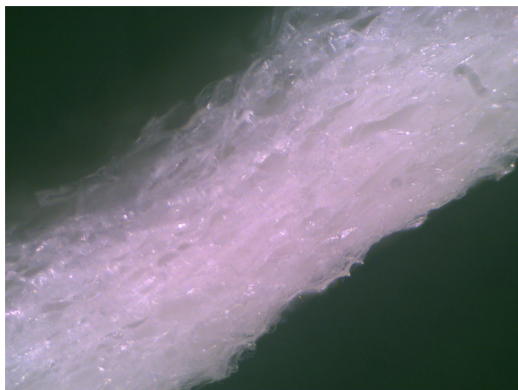
Hypro-Sorb X consists of 99,9% natural, pure, crystalline, resorbable, sterile, bovine Atelo-Collagen Type I (free of antigenic telopeptides).

Shelf life:

The cones are safe for five years after production.

Storage conditions:

Hypro Sorb® X must be stored in a dry place at room temperature. It is not damaged by temperatures between -25°C to +50°C. It must be protected from direct sunlight and heat. The products are sterile for five years.



pure, crystalline atelocollagen structure

Hypro-Sorb® X Product Portfolio

Product Name	Cat.no.	Size & Pcs./Package	Description
Hypro-Sorb X	014	Ø6 x 20 x Ø10 mm 10 Pieces	Atelo-Collagen Type I cones for haemostasis and alveolar ridge preservation after tooth extraction

Hypro-Sorb® X is a medical device of class III. It was clinically tested and is certificated by notified body No. 1023, EC Certificate No. 09 0627 QS/NB , and EC Design-Examination Certificate No. 09 0628 CN/NB.

Bioimplon GmbH
Friedrich-List-Str. 27
35398 Giessen
Germany

Tel: +49 641 68 68 11 23
Fax: +49 641 68 68 11 24
info@bioimplon.de
www.bioimplon.com